

PELISTRY CAMPSITE



PELISTRY FARM, ST MARY'S, ISLES OF SCILLY





PELISTRY CAMPSITE

Pelistry Campsite is a family run campsite on St Mary's, Isles of Scilly. Situated on the eastern side of the main island and only a couple of minutes' walk from Pelistry beach.

MERVYN & STEPHANIE BIRD

PELISTRY CAMPSITE

07917176854 | 01720 423117

WAYSIDE, PELISTRY FARM, ST MARY'S, ISLES OF SCILLY, TR21 ONX

BOOKINGS | AMY

CAMPING@PELISTRYFARM.CO.UK.

MAKING A BOOKING



EMAIL: CAMPING@PELISTRYFARM.CO.UK | CALL: 07704261679

Camp will run from Friday to Friday or Monday to Friday. If you are arriving at any other time, please ensure you inform the us at the time of booking.

Making a booking enquiry for Pelistry campsite is quick and easy, simply complete the booking form with the group's name, chosen dates, the estimated number of adults and children, contact details, and email it through to: camping@pelistryfarm.co.uk.

PITCHES & FARES

PITCHES

There are three sites that make up Pelistry Campsite - Sea View, Island View and South Pelistry.

Sea View and Island View sites both have 10 sleeping tents, sleeping up to 46 persons with floorboards and mattresses.

South Pelistry has 8 sleeping tents, sleeping up to 36 persons with floorboards and mattresses.

All of our sites have their own kitchen and dining marquees, equipped with almost all cooking equipment you will need for your stay, plus wash tents and toilets.

A non-refundable deposit of 20% of the minimum cost of the site is required to secure your booking.

You will be sent your final invoice 6 weeks prior to arrival with final payment being due 4 weeks prior to your date of arrival.

Please email camping@pelistryfarm.co.uk with your booking enquiry to receive a quote for your stay.

PELISTRY BEACH



The campsite is situated on the eastern side of the main island and only a couple of minutes' walk from Pelistry beach.



ISLAND ACTIVITIES

- The island has companies which can provide sailing, canoeing, horse riding, snorkelling, and diving.
- All sorts of walks are available including the possibility of walking the coastal footpath round St Mary's (approx. 5-6 hours at a steady pace).
- **Cornwall Wildlife Trust** produces habitat packs for hedgerow, sand dunes and seashore. These are available from the Trust Offices, 01872 273939 info@cornwallwildlifetrust.org.uk.
- You could also make use of the **Isles of Scilly Wildlife Trust**. Please contact the Education Officer. 01720 422153 hello@ios-wildlifetrust.org.uk
- **The St Mary's Boatmen's Association** operates a number of boats which run circular tourist trips as well as ferrying passengers to the various off islands. Details of each day's trips are posted in the town and on the quay. Some are particularly weather-dependent, e.g. the trip to the Bishop Rock lighthouse and the Western Rocks. The boats generally run to a timetable, however if you have a particular need or request, contact the team. 01720 423999 enquiries@scillyboating.co.uk
- **Five Islands Academy** has a football club which will be pleased to arrange games against visiting groups during the summer.





BOATING & WATER TAXI OPTIONS:

ST MARY'S BOATMEN'S ASSOCIATION	01720 423999	Tickets for the off-islands can be bought on the day or in advance. They are available from the TIC, Tideline, Douglas' or from the kiosk on the quay. Tickets cannot be bought online.
FALCON BOATING	07841 368987	Wildlife and scenic tours, private and mainland charters.
RAPTOR BOATING	07729 127877	Wildlife and scenic tours, private and mainland charters.
CALYPSO II	07470 307575	See the chalkboard outside Tideline for trip details.
HUT 62	07979 393206	Boat hire from Bryher, Tresco and St Martin's.
ENDEAVOUR RIB SERVICE	07979 393206	Water taxi, marine wildlife trips, RIB blasts and evening trips.



St. Mary's quayside is bustling with local boatmen, ready to carry visitors to the off islands.



TELEPHONE

The nearest pay phone is located at Telegraph Hill. Groups should therefore take a mobile with them. There is a reasonable coverage for networks on the islands. There is a power point available in the freezer room.

GENERAL

ISLES OF SCILLY TRAVEL	01736 334220
ISLAND CARRIERS	01720 422662
HEALTH CENTRE	01720 422628
ST MARY'S HOSPITAL	01720 422392
ST MARY'S DENTAL CENTRE	0333 405 0291
HARBOUR MASTER	01720 422768
POLICE STATION	01720 422444
POST OFFICE	01720 422454
TOURIST INFORMATION	01720 424031

TRANSPORT

TOOTS TAXI	01720 422142
DJ CABS	01720 423775
PAULGERS TRANSPORT	01720 423701

*Public vehicles are not permitted on the campsite; all taxis must drop off by the main farm buildings.

ACTIVITIES

ST MARY'S MUSEUM	TOWN HALL
ISLES OF SCILLY GOLF CLUB	01720 422692
ST MARY'S RIDING CENTRE	01720 423855
IOS WINDSURF & SAILING CENTRE	01720 424060
NORMANDY SWIMMING POOL	01720 424440
ST MARY'S BIKE HIRE	07552994709
ISLES OF SCILLY WILDLIFE TRUST	01720 422153
PHOENIX STAINED GLASS WORKSHOPS	01720422900



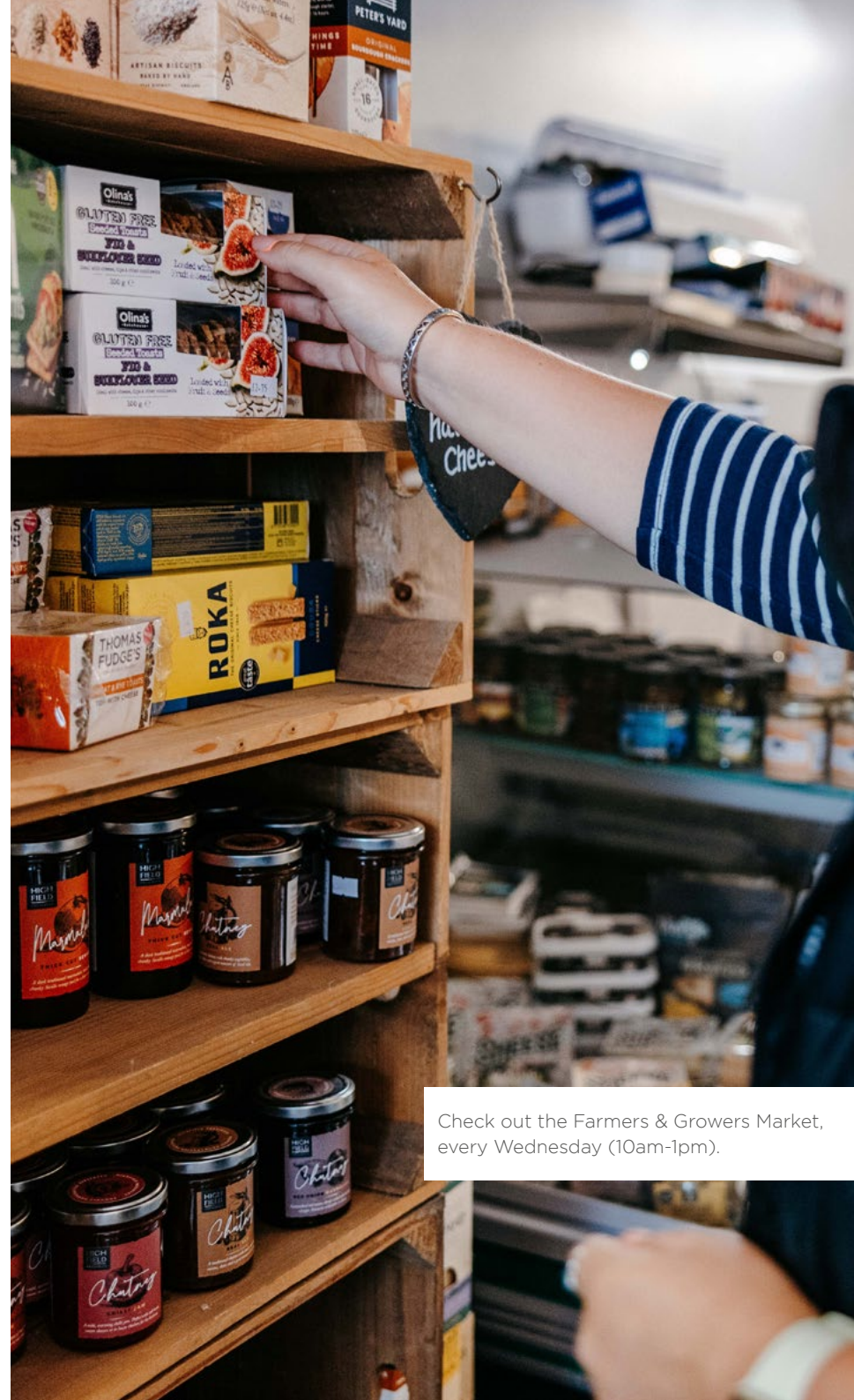
For more information on activities, contact the Tourist Information Centre.



FOOD & DRINK

It should be remembered that the islands are dependent on Scillonian III and Gry Maritha for most fresh supplies. Supplies often are not delivered to businesses until lunchtime each day, and therefore may not be on shelves until the afternoon.

VENUE	TEL. NO	TAKEAWAY	GROCERIES
BECKY'S SCILLY CAKES	01720 423741	YES	NO
POM THAI TAKEAWAY	07554 063868	YES	NO
SCILLY FISH	07876 340032	YES	NO
THE GALLEY	01720 422602	YES	NO
THE BAKERY SHOP KITCHEN	07387 613759	YES	NO
CO-OP	01720 422396	NO	YES
BENNEY'S BUTCHERS	01720 422994	NO	YES
FARMERS & GROWERS MARKET	07540 421137	NO	YES
OLD TOWN STORES	01720 421190	NO	YES
SALAKEE FARM	01720 422391	NO	YES
SCILLY FOOD BOXES	-	NO	YES
THE STORE	01720 423308	NO	YES
HUGH STREET CAFÉ	01720 422734	YES	YES



Check out the Farmers & Growers Market, every Wednesday (10am-1pm).



TENTS AND MARQUEES

The site is equipped with all the essential facilities you should need.

Please also see our equipment lists, and our suggestions on what you may need to bring with you.

SLEEPING TENTS

Our sleeping tents have six floorboards inside them, set out in such a way to keep you raised slightly off the ground, to help keep you warm and dry.

Each tent is equipped with sleeping mattresses for added comfort. These are PVC covered and made with fire retardant foam.

WASH TENTS

Our wash tents are situated nearest to the toilets and each contain a single table.

The two tents are not suitable for sleeping in (no floorboards!) and are dedicated private areas to wash in.

DINING MARQUEE

We have a dining marquee on the site, which has enough tables and benches for each group.

COOKING MARQUEE

There is a dedicated cooking marquee which houses the site's cooking equipment.

EXTRA TENTS

Should you feel the need to bring extra tents, you will need to seek prior permission from Mervyn Bird.

CAMPING FACILITIES

WATER HEATER

This is to be used for heating water for cooking and dishes. It is not to use as drinking water.

DOUBLE BURNER

This piece of equipment is designed to be used with the large cooking equipment.

GAS HEATER

This is a very simple gas-powered heater with three settings.

FREE STANDING COOKER

This is just like a household cooker. Cooking times may well be affected and may take considerably longer.

RUBBISH

There are bins and recycling facilities to discard of your rubbish at the end of your stay.

TOILETS

There are toilets on the site, but you will need to bring your own cleaning products.

BBQS

Disposable BBQs are not to be used on the campsites.

FREEZER AREA

There are two dedicated fridge freezers for each site. These are a 50/50 split fridge and freezer.

GAS BOTTLES

The Site Manager will discuss changing the gas cylinders with the leader of the camp on arrival. Any problems with the cylinders, please contact the Site Manager.

SOCKET CHARGING AREA

There is a communal socket charging area available, however items left here are the sole responsibility of the user.

SHOWERS

There are three showers and a toilet in our shower room. These are self-contained shower cubicles with a £1 coin meter on the outside. The pound gives you approximately six minutes of hot water time. These showers are for adult use only.



Please note that the following lists are specific to each campsite.

If you have been allocated two sites, please ensure the inventory is correct for each site upon your departure.

A water supply will be laid on in the field. Gas will also be supplied. Equipment should not be moved from site to site.

Please refer to the equipment lists. If anything is missing, please report to a member of Pelistry Campsite staff.

Failure to do so will result in the group being charged.

CAMPING EQUIPMENT Sea View & Islands View

CANVAS/ EQUIPMENT

1 dining marquee
1 cooking marquee
10 Dabris tents with floorboards
2 washhouse tents
1 store shed or tent
3 flushing toilets
46 mattresses
2 fridge/freezers in farm building per site

MISCELLANEOUS

1 spade
1 rake
4 Lump hammers
1 hard brush
3 toilet brushes
2 fire extinguishers
1 fire blanket
spare rope for guys

WATER

4 10 litre water carriers
2 buckets
4 buckets with lids
20 hand washing bowls
1 large steel bowl

KITCHEN & DINING

17 tables (incl wash tables)
20 benches
1 double burner (gas)
2 full size cookers (gas)
1 water heater (gas)
1 gas fire
1 food cupboard
1 large Dixie with lid
2 medium Dixies with lids
4 small Dixies with lids
6 saucepans
2 kettles
2 tea pots
5 prep food boards
4 roasting tins
4 cooking / oven trays
3 fish slices
2 ladles
2 food insulated containers
2 large frying pans
2 small frying pans
1 colander
10 assorted cooking bowls
10 assorted jugs
4 plastic trays
1 potato masher
2 graters
2 palette knives
4 steel serving spoons
2 wooden spoons
1 perforated spoon
2 whisks
3 potato peelers

CAMPING EQUIPMENT South Pelistry

CANVAS/ EQUIPMENT

1 dining marquee
1 cooking marquee
8 Dabris tents with floorboards
2 washhouse tents
1 store shed or tent
3 flushing toilets
36 mattresses
2 fridge/freezers in farm building

MISCELLANEOUS

1 spade
1 rake
4 lump hammers
1 hard brush
3 toilet brushes
2 fire extinguishers
1 fire blanket
spare rope for guys

WATER

4 10 litre water carriers
2 buckets
4 buckets with lids
20 hand washing bowls
1 large steel bowl

KITCHEN & DINING

17 tables (incl wash tables)
14 benches
1 double burner (gas)
2 full size cookers (gas)
1 water heater (gas)
1 gas fire
1 food cupboard
1 large Dixie with lid
2 medium Dixies with lids
3 small Dixies with lids
6 saucepans
2 kettles
2 tea pots
5 prep food boards
4 roasting tins
4 cooking / oven trays
3 fish slices
2 ladles
2 food insulated containers
2 large frying pans
2 small frying pans
1 colander
10 assorted cooking bowls
10 assorted jugs
4 plastic trays
1 potato masher
2 graters
2 palette knives
4 steel serving spoons
2 wooden spoons
1 perforated spoon
2 whisks
3 potato peelers

PLEASE NOTE
THERE ARE NO
KITCHEN KNIVES
LEFT ON THE SITE.

All lists are correct
at the time of
printing.



CAMPING EQUIPMENT Suggested packing list

Below is a list of suggested items for each group to supply themselves as they will not be supplied by the campsite.

Each person is required to bring cutlery, plates, bowl, and mug for their own use.

Groups are required to provide their own lists for what may be required for personal kits.

- Tablecloths - plastic/polythene
- Tea towels
- Dish cloths
- Washing-up cloths
- Hand towels
- Cling film / kitchen foil
- Toilet rolls
- Cleaning materials
- Tin opener
- Kitchen scales (if required)
- Tool/repair kit
- Lighting/torches - not petrol lamps or candles
- Spare sleeping bag(s)/blankets
- First aid kit
- Kitchen scissors
- Bin liners
- Rubber gloves (heavy duty)
- Oven gloves
- Kitchen tongs
- Sharp kitchen knives
- Clothes pegs

Please remember groups are responsible for providing their own lighting.



CAMP GUIDELINES EQUIPMENT AND FACILITIES

DURING YOUR STAY

The whole site should be kept free from litter.

No dogs are allowed on the site.

Please do not pin or nail items to the marquee poles.

FIRE SAFETY

No smoking on the site.

Campers should be made aware of action in the event of a fire therefore a fire drill should be held as soon as possible after occupying the site. Note of the fire assembly point should be made.

No naked flames, i.e. candles, to be used in any of the tents.

No open fires allowed anywhere on the islands.

The use of disposable BBQs is now not allowed on the site.

WATER HEATER

This is to be used for heating water for cooking and dishes. It is not drinking water.

When not in use please

turn it off from the gas bottle and never allow it to boil dry, as this will cause damage.

Users will be charged for any damage.

DOUBLE BURNER

This is designed to be used with the large cooking equipment.

Smaller pots and pans are better suited for use on the gas rings on the free-standing cooker.

They will boil quicker and are more efficient.

FREE STANDING COOKER

This is just like a household cooker, however cooking times may take slightly longer due to the weather conditions - you will be cooking in a marquee and it could get draughty!

GAS HEATER

Our simple gas-powered heater have three settings.

Do not place anything

on top of the heater as it gets very hot when in use.

It may look like a great place to dry your socks, but you must not place anything on top of the heater as it gets very hot when in use. This will cause damage to your belongings and the heater.

The heater has an electronic spark ignition which may not work in damp conditions. If this happens carefully using a wax tapper or long cook matches light from the front, middle, bottom of the heating area.

GAS BOTTLES

The Site Manager will discuss changing the gas cylinders with the leader of the camp on arrival.

Any problems with the cylinders during the camp please contact the Site Manager.

RUBBISH

Please separate rubbish into metals/ glass / food waste / burnable.

Please remove gas canisters, deodorants or any other pressurised

containers and place them in a separate crate along with batteries.

Please empty bins of rubbish bags at the end of your stay and put the bags in the plastic box on the pallet.

TOILETS

For the duration of your stay, please keep the toilets clean and tidy.

You will need to bring your own cleaning products and ensure the toilets are left clean when you leave the site on your final day.

Please report any problems to the site supervisor.

BBQS

Disposable BBQs are not to be used on the campsites.

SHOWER / FREEZER ROOM

The shower and freezer room are accessed through the dedicated gate in the lane.

WORKING FARM

This is a working farmyard with heavy machinery working and moving on a daily basis.

Under no circumstances should anyone enter the farmyard area.

FREEZER AREA

There are two fridge freezers for each of our sites. These are a 50/50 split fridge and freezer.

Please remove all food rubbish from this area when you leave the site on your final day.

Food crates/milk crates are your responsibility to return or organise collection of.

Opposite the freezers is our socket/charging area which must be kept clear of any food.

SOCKET CHARGING AREA

Please keep this area clear, items left are done so at the owner's risk.

Please be considerate to other campsite users and not abuse these facilities.

SHOWERS

There are three showers and a toilet in this room.

The self-contained shower cubicles operate with a £1 coin meter on the outside.

The light comes on in the shower unit when your pound is inserted and gives you approximately six minutes of hot water time. A beeper will sound one minute before the hot water will stop.

Please keep this area clean and tidy, ensuring personal belongings or shower products are removed from the shower units.

These showers are for adult use only apart from exceptional circumstances.

BEFORE YOU LEAVE

Before leaving site at the end of your stay please clean out tents. Then fully close and peg down doors. Also please have a walk around the site and remove any rubbish.



CAMP GUIDELINES TENTS AND MARQUEES

SLEEPING TENTS

The floorboards should never be moved.

Mattresses are foam filled and will soak moisture if left outside overnight or in the rain. Mattresses are not to be moved from site to site.

The canvas tent material reacts to the elements. It may shrink and become tighter when wet, and expand when warm and dry. If the guy ropes are tightened too much when warm and dry, damage may be caused later if the fabric starts to shrink in evening dew or rain.

If ropes do get tightened excessively then dry ropes may break, canvas may rip and it is likely that the weave of the canvas will open up as it's stretched, allowing moisture to pass through the canvas fabric.

Many campers mistake condensation for a leaky tent. If it's raining the tent cannot breathe, so will condensate a little, especially if you are spending more time in your tent. Bringing wet clothing into the tent will also increase condensation.

Never touch the inside of your tent; never allow anything to touch the inside of your tent. Touching your tent to see if it's waterproof in the rain, doing this will allow water to pass through the material from the outside to the inside.

Don't allow anything to contaminate the fabric of your tent, such as deodorants and sun cream, both of which completely kill the impregnated waterproofing of your tent.

Don't keep food in your tent. Food or sweets will attract unwanted furry visitors, slugs, flies and wasps. Under no circumstances should food be prepared inside your sleeping tent on our site.

No tent is fireproof; our tents are fire retardant but will still burn. Never use open flames (candles and fuel powered lanterns) in any tent, other than the gas equipment in the supplied cook marquee.

DINING MARQUEE

Please do not allow the benches to become overloaded or allow

people to rock on the benches as this may damage the users and the equipment.

During your stay, please wipe down the tabletops and benches.

No naked flames, candle, lamps are allowed in the dining marquee.

The marquee is made from re-enforced PVC, a very waterproof material, which on hot sunny days, or if full of people on cold damp days, the roof may condensate a little.

The outside of the marquee is surrounded by approximately thirty large steel pegs needed to secure the marquee to the ground, please be aware of these and the ropes and ratchets when moving around the marquee - especially in the dark.

Unlike the sleeping tents the marquees do not need tightening or adjusting. The guys and ratchets are fixed as the material does not stretch or shrink.

COOKING MARQUEE

The cook marquee is the same as the dining marquee so does not need

tightening or adjusting.

Please clean the walls behind the cooking equipment during your stay and before you leave.

KITCHEN HEALTH AND SAFETY

Pupils/students should not be left unsupervised in the kitchen at any time.

Remember common-sense procedures of a domestic kitchen apply equally in a camp kitchen.

Hygiene is vital. Those involved in cooking and preparation of meals must wash their hands prior to starting work. Equally, washing-up should be done properly. Dirty dishes or pans should not be allowed to accumulate.

Please ensure kitchen walls in the vicinity of cooking area are washed at least once a week.

Do not dispose of washing-up water in the hedgerow as food granules attract vermin.

The cooker and double burner should be cleaned regularly to avoid any

build-up of grease. Please use cream cleaner on the cooker and do not use scouring pads.

All pot, pans and other kitchen equipment must be cleaned inside and outside before leaving the site.

Please ensure the cooker, double burner and their stands are not too close to the marquee walls as this is a potential fire hazard.

CHANGEOVER

A member of Pelistry Campsite staff will supervise incoming and outgoing groups and will undertake an equipment check.

Groups will be charged for any unnecessary loss of or damage to equipment.

MEDICAL DETAILS

Group leaders should obtain medical and health details of group members from parents.

